

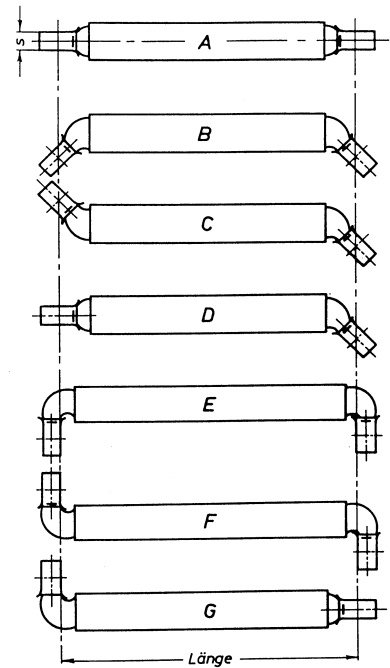
Product Overview

Connecting Cable - Air-Cooled

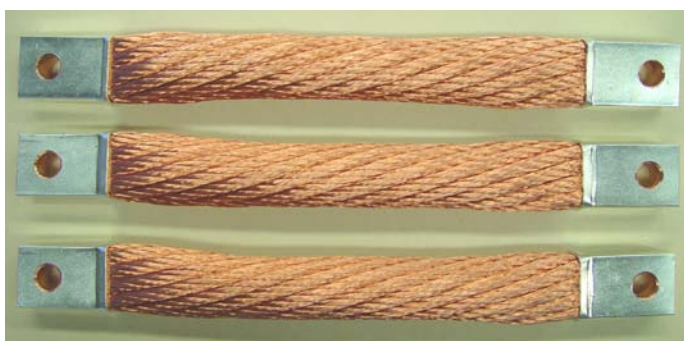
Air-cooled connecting cable according to DIN or ISO and all standards of the automobile industry



The rubber hose can be supplied without perforations or with perforations. Also available with non DIN holes.



Connecting cable in different forms, according to wished installation position.



Connecting cable with silvered terminals -

Connecting cable with single insulation available.



Connecting Cable - Water-Cooled

Water-cooled connecting cable according to DIN or ISO and all standards of the automobile industry

a) 100 mm² to > 1000 mm²

both terminals flat connection in various variations



b) 100 mm² bis > 600 mm²
one side flat terminal, one side plug in various standards

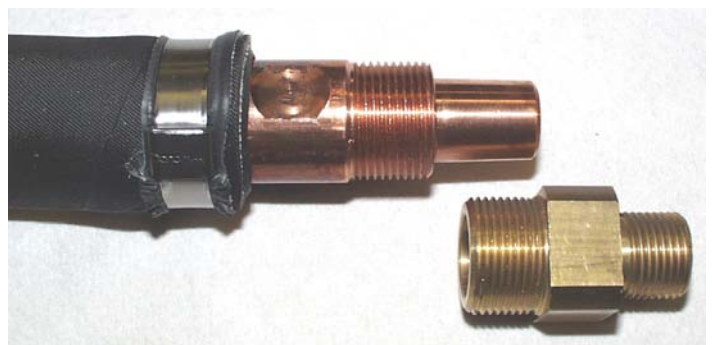
c) 100 mm² to > 600 mm²
two sides plugs in various forms and after various company own standards



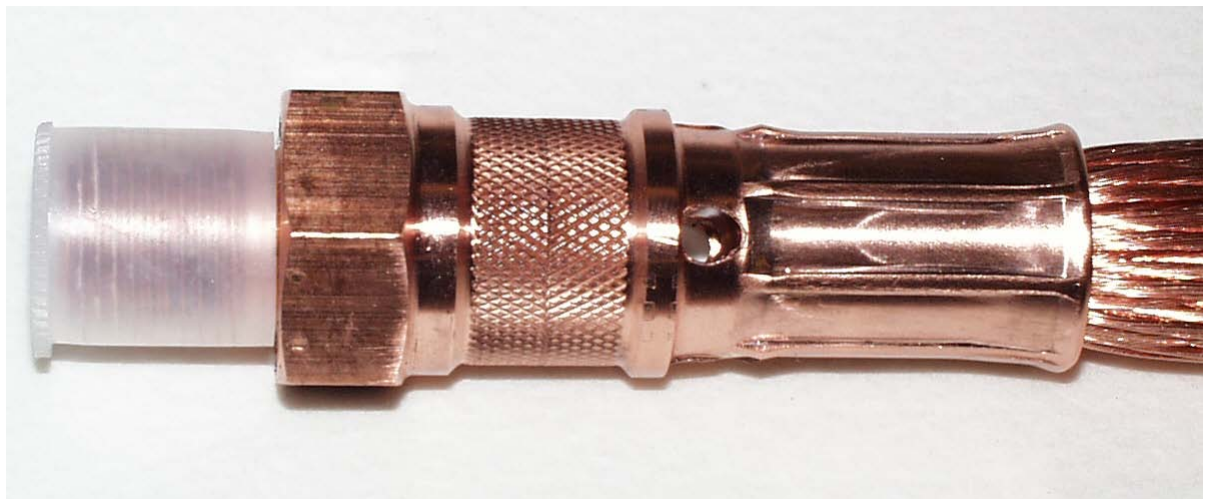
Delivery available with normal outside cooling or with combined inside outside cooling

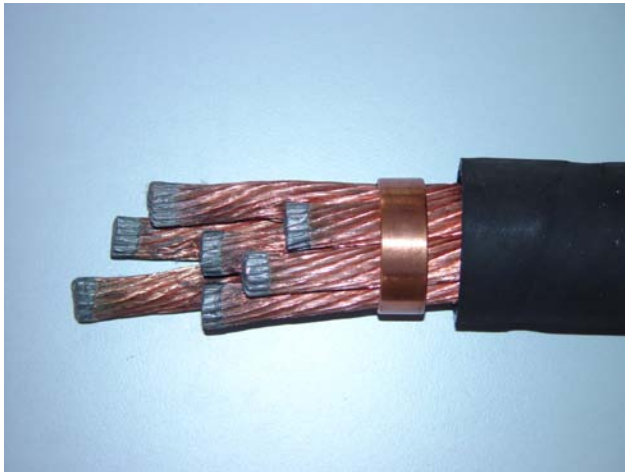


Various special forms in plug types are available



Examples of terminals





700 mm² water-cooled welding cable
with flat terminals



Shunts in all
standards
available

Electrodes in different standards available



Some examples of used terminals



Copper wire and terminal welded
together to improve the resistance



Connecting Cable Air-cooled from flat braid volume – single wire 0.10 mm²

Air-cooled connecting cable according to own and all standards of the automobile industry – construction from flat braid tapes of a single wire strength 0.10 mm²

Manufacturing as standard types from flat braid tapes with the cross sections

from 35 mm ²	245 – 280 – 315 – 350 – 385 – 420 – 455 – 490 – 525 – 630	mm ²
from 50 mm ²	300 – 350 – 400 – 450 – 500 – 550 – 600	mm ²
from 70 mm ²	490 – 560 – 630	mm ²
from 120 mm ²	720 – 960 – 1080	mm ²

other compositions are feasible at any time



Various air-cooled flat braid tapes according to Daimler Chrysler standards 280 mm²

Flat braid volume 455 mm²
from 13 x 35 mms ²

according to
GUMA - Standards



Connecting Cable - Water Cooled - Two Pole Types

Water-cooled welding cable with a section from 2 x 160 mm² to 2 x 325 mm²



Standards according to DIN or according to standards of the automotive



Connection of one two pole cable to two cable single phase type.



Special standard of Daimler Chrysler Types

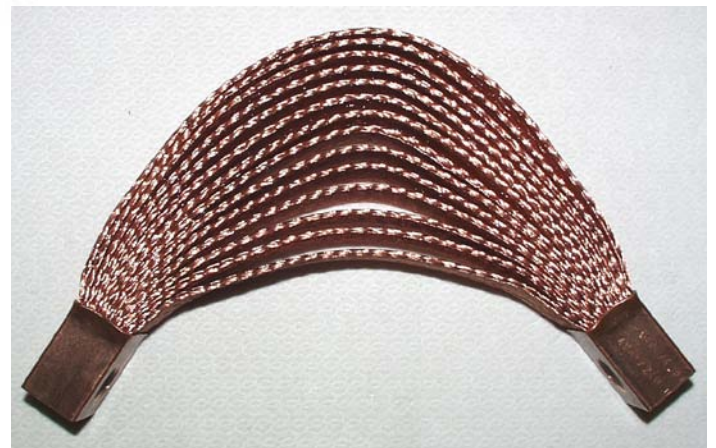
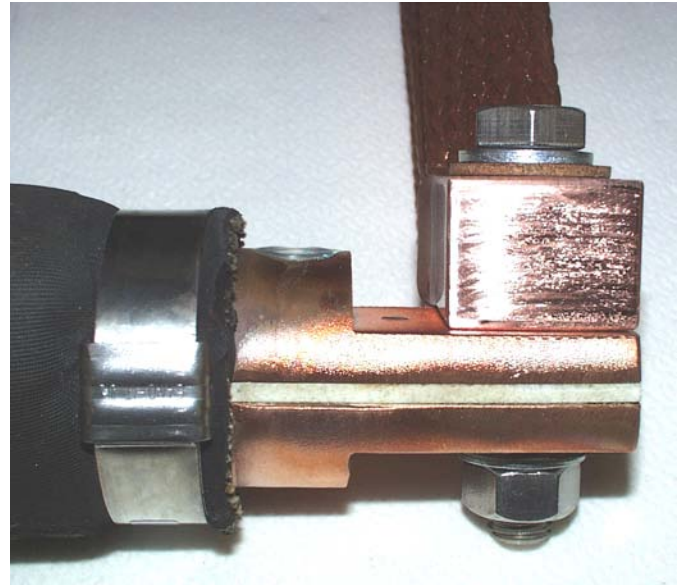
Two pole cable with
Polyurethan hose



Connecting element of a two Pole Cable to the gun with two braided cable



Execution of the braided cable in approximate double cross section like the water-cooled two pole cable



Braided cable 14 layers adequate 490 mm²

FLY_E_01